

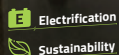
ZOOMLION

NEW ZX76AE/ZX89AE SPIDER LIFTS

HIGHLIGHTS

- ▶ 0.89m ultra-narrow width, quick-change work platform, easy access to compact spaces
- ▶ Pure lithium-ion battery power features environmental protection and quiet operation
- ▶ Accurate and efficient permanent magnet synchronous motor provides strong power and stable control
- ▶ Non-marking rubber track suitable for all terrains
- ▶ Central layout, great structural rigidity, and small boom deflection
- ▶ Bus hydraulic valve control system offers stable and reliable movement
- ▶ Advanced energy management system supports synchronous power supply from external power supply, providing long-lasting battery life

CE/ANSI/CSA Certified



FEATURES

Standard Features

- ▶ Proportional control
- ▶ All motion alarm
- ▶ Flashing beacon
- ▶ Self-closing entry gate
- ▶ Emergency descent system
- ▶ Emergency stop button
- ▶ Auto-leveling system
- ▶ On-board diagnostic system
- ▶ Auto-leveling outrigger
- ▶ Non-marking rubber track
- ▶ Load sensing system
- ▶ Color display
- ▶ Horn
- ▶ Hour meter
- ▶ Use while charging
- ▶ Wireless remote
- ▶ Proportional handle steering
- ▶ 60A Lithium-ion Battery Smart Charger
- ▶ Battery level display
- ▶ Low battery protection

Accessories & Options

- ▶ AC power to platform
- ▶ Air line to platform

ACCESS WITH ZOOMLION GREEN

Phone: 1 (833) USA-ZOOM
E-mail: sales@zoomlion-na.com

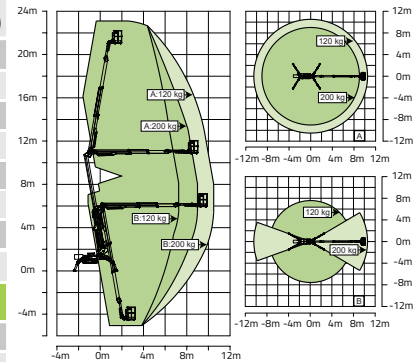
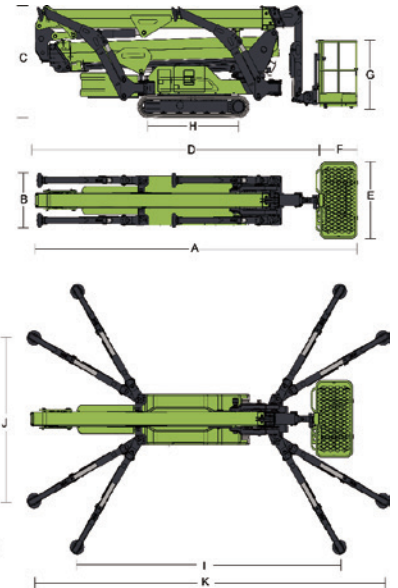
Add: Zoomlion Heavy Industry NA, Inc. 14215 Two Mile Road, Yorkville, WI 53126
Web: www.zoomlion-na.com

MAIN SPECS OF SPIDER LIFTS

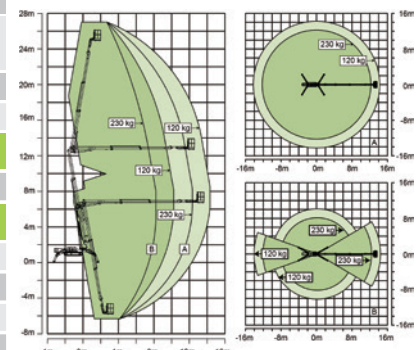
ZX76AE/ZX89AE

Comply with CE/ANSI/CSA Standards

Model	ZX76AE		ZX89AE	
	Metric	Imperial	Metric	Imperial
Size				
Work Height	23m	75ft 6in	27m	88ft 7in
Platform Height	21m	68ft 11in	25m	82ft
Horizontal Outreach	10.5m	34ft 5in	14.2m	49ft 7in
Up and Over Height	10.87m	35ft 8in	12.45m	40ft 10in
Below Ground Reach	4.4m	14ft 5in	5.8m	19ft
A - Stowed Length (w/ platform)	5.44m	17ft 10in	6.15m	20ft 2in
D - Stowed Length (w/o platform)	4.98m	16ft 4in	5.7m	18ft 8in
B - Stowed Width	0.89m	2ft 11in	0.89m	2ft 11in
C - Stowed Height	1.99m	6ft 6in	2.05m	6ft 9in
E - Platform Length	1.4m	4ft 7in	1.4m	4ft 7in
F - Platform Width	0.7m	2ft 4in	0.7m	2ft 4in
G - Platform Height	1.25m	4ft 1in	1.25m	4ft 1in
H - Crawler Size (Length×Width)	1.124m×0.23m	3ft 9in×9in	1.52m×0.25m	4ft 11in×10in
I - Max Length w/ Outrigger Extending (Standard)	3.85m	12ft 8in	4.95m	16ft 3in
L - Max Width w/ Outrigger Extending (Standard)	3.85m	12ft 8in	4.48m	14ft 8in
K - Max Length w/ Outrigger Extending (Narrow)	5m	16ft 5in	6.45m	21ft 2in
J - Max Width w/ Outrigger Extending (Narrow)	2.6m	8ft 6in	2.88m	9ft 5in
Outrigger Pad Size (Diameter)	0.26m	10ft	0.26m	10ft
Approach Angle	25°		15°	
Depature Angle	27°		24°	
Performance				
Platform Capacity	200kg/120kg (restricted)	440lb/265lb (restricted)	230kg(restricted) 120kg(unrestricted)	510lb (restricted) 265lb (unrestricted)
Drive Speed	2km/h	1.25mph	2km/h	1.25mph
Gradeability	16.7°/30%		16.7°/30%	
Allowable Tilting Angle When Driving	10°/17%		10°/17%	
Turntable Swing	400° non-continuous		400° non-continuous	
Platform Rotation	±90°		±90°	
H-Tail Swing	0m		0m	
Max Leveling Angle	16°		16°	
Max Wind Speed	12.5m/s	28 mph	12.5m/s	28 mph
Power				
Battery	315Ah 48V		315Ah 48V	
Charger	48V/60A		48V/60A	
Drive Motor	Permanent magnet synchronous motor 48V		Permanent magnet synchronous motor 48V	
Lift Motor	Permanent magnet synchronous motor 48V		Permanent magnet synchronous motor 48V	
Auxiliary Power	Electric pump		Electric pump	
Hydraulic Tank Capacity	50L	13.2 us gal	50L	13.2 us gal
Tire				
Crawler type	Non-marking rubber track		Non-marking rubber track	
Weight				
Gross weight	3000kg	6614 lb	4650kg	10251 lb
Ground Pressure When Driving	29.6 kN/m²		33.68kN/m²	
Ground Pressure When Working (Standard)	1.98 kN/m²		2.05kN/m²	
Ground Pressure When Working (Narrow)	2.26 kN/m²		2.45kN/m²	
Pressure on Single Outrigger When Working	13.8KN		31.89KN	



Range of Motion ZX76AE



Range of Motion ZX89AE